

# Sovereign Data Spaces

CIOnet - June 23 2026



**Björn De Vidts**

CEO



**David Van Den Brande**

CTO

# Sovereignty



# Control



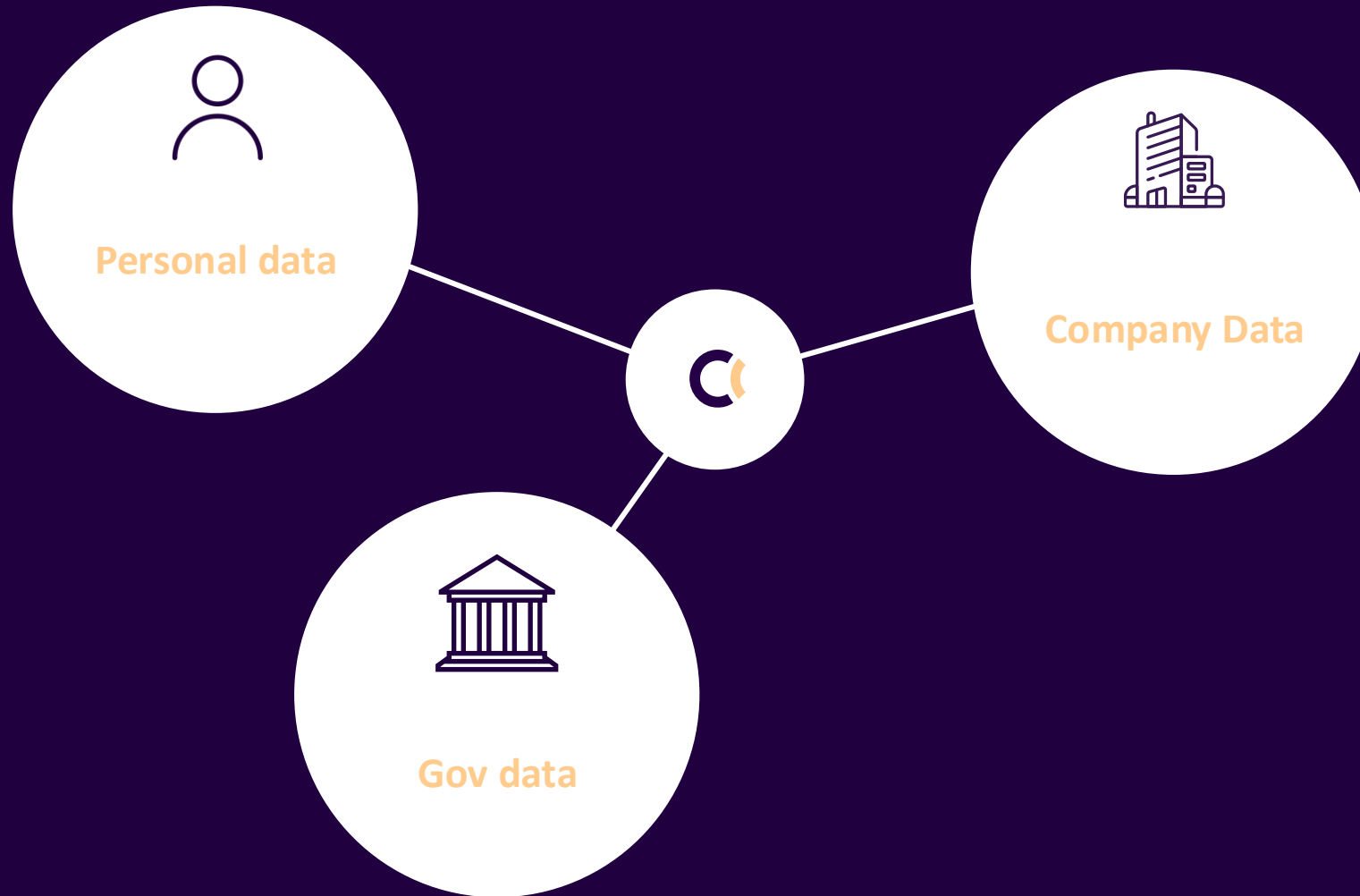
**ATHUMI EST. 2022**



An aerial photograph of a winding asphalt road that curves through a dense, lush green forest. The road is dark and contrasts with the vibrant green of the trees. The perspective is from directly above, showing the road's path as it meanders across the landscape.

**WE DON'T TAKE  
CONTROL OF DATA.  
WE MAKE IT WORK.**

# ATHUMI ORGANISES TRUSTED ACCESS TO CRITICAL DATA



# ACCESS TO CRITICAL DATA HAS NEVER BEEN THIS STRATEGIC



## Web

All public information  
is available



## Mobile

Information is available  
everywhere



## Cloud

Infinitely scalable



## AI

Smart & hyper personalized services

AMOUNT OF DATA





**THIS BRINGS ME  
TO  
DATA SPACES.**

**A DATA SPACE IS NOT JUST A  
TECHNICAL PLATFORM.**

**IT'S A TRUSTED ENVIRONMENT.**

# IT ORGANISES:

- IDENTITY

- ACCESS

- SECURITY

- ROUTES

- RULES

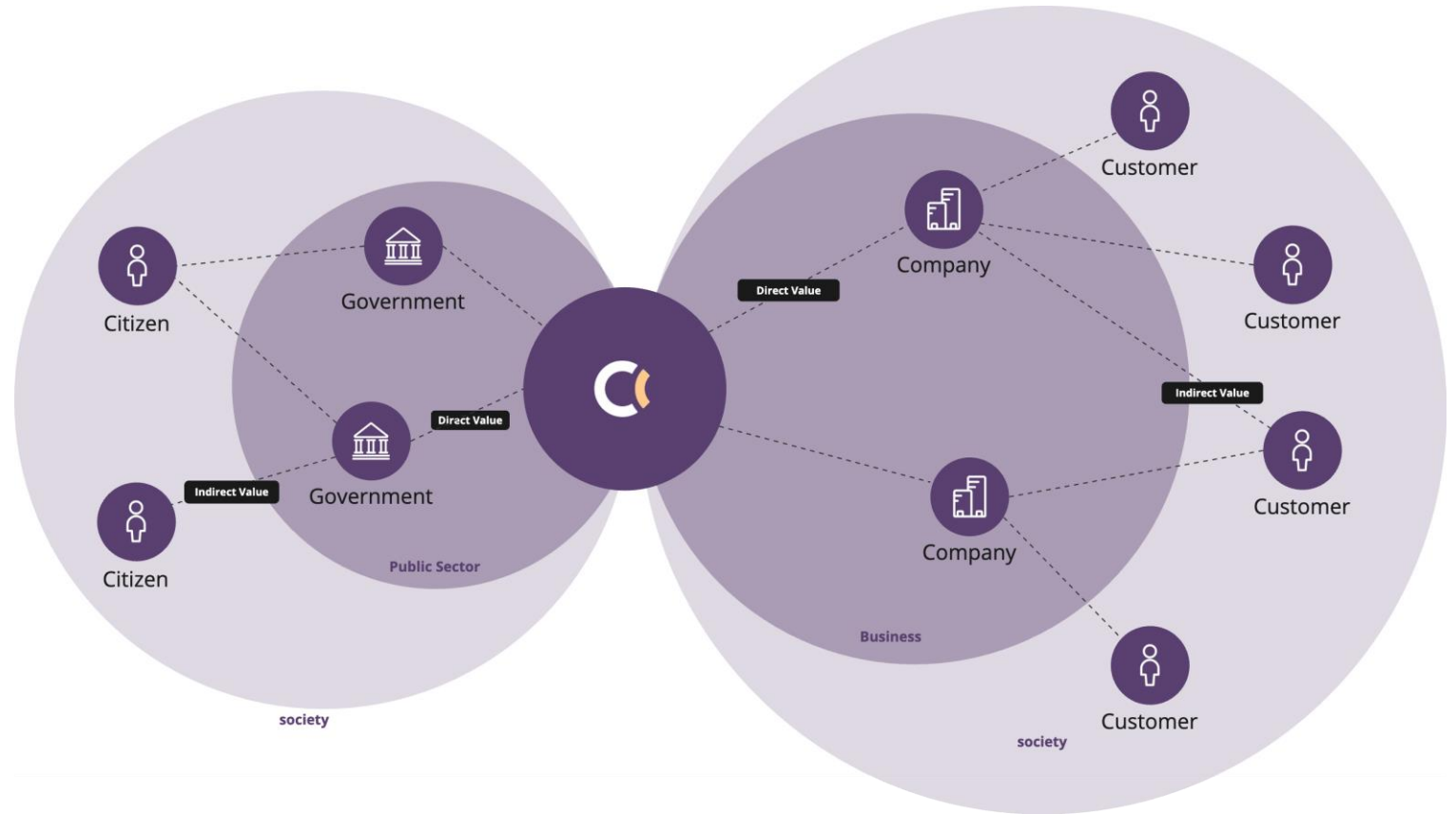
- STANDARDS


- TRUST.

# IT'S A PUBLIC-PRIVATE VALUE CREATION MODEL.

We operate at the intersection of public authority and private innovation.

There's an economic side. But there's also a societal side.





**13.396**

connected organisations from

**7**

sectors

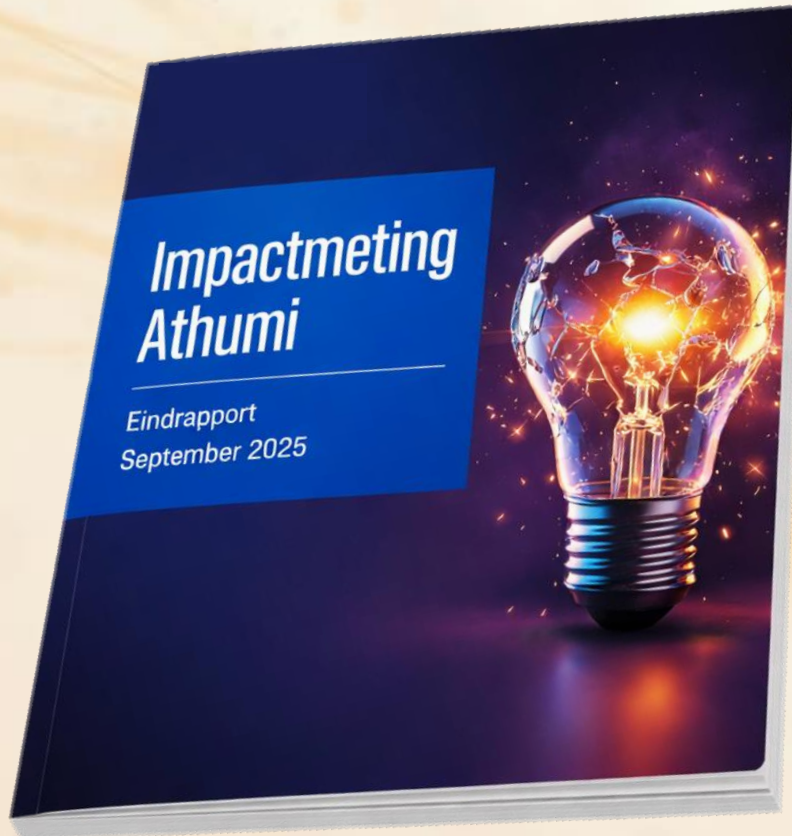
**112**

unlocked datastreams

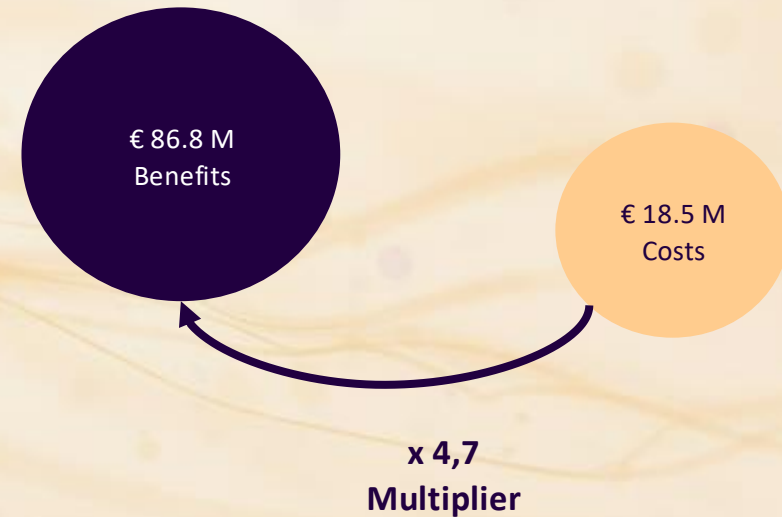
**+23 million**

transactions

# BENEFITS ARE SIGNIFICANTLY HIGHER THAN COSTS.



Benefits private sector	€ 72.1 M
Benefits public sector	€ 14.7 M
<b>Total benefits</b>	<b>€ 86.8 M</b>



**NOT**



**BLACK  
AND WHITE**

# SOVEREIGNTY IS CHOICE

# PREPAREDNESS AND AGILITY

# SOVEREIGNTY IS GOVERNANCE AND CONTR



**AT ATHUMI, SOVEREIGNTY  
HAS TWO LAYERS.**

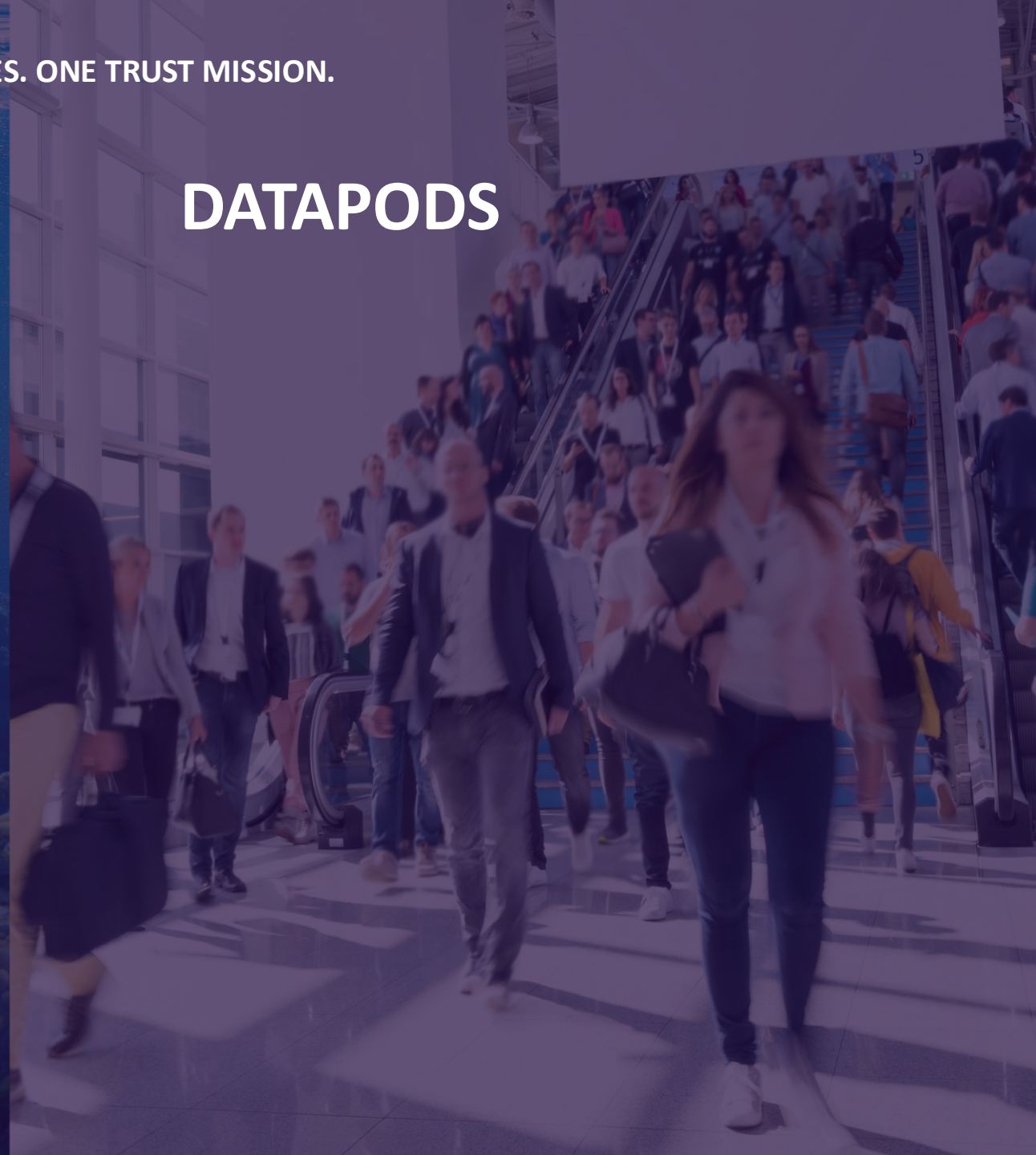


TWO ROLES. ONE TRUST MISSION.

# B2B DATA ECOSYSTEMS



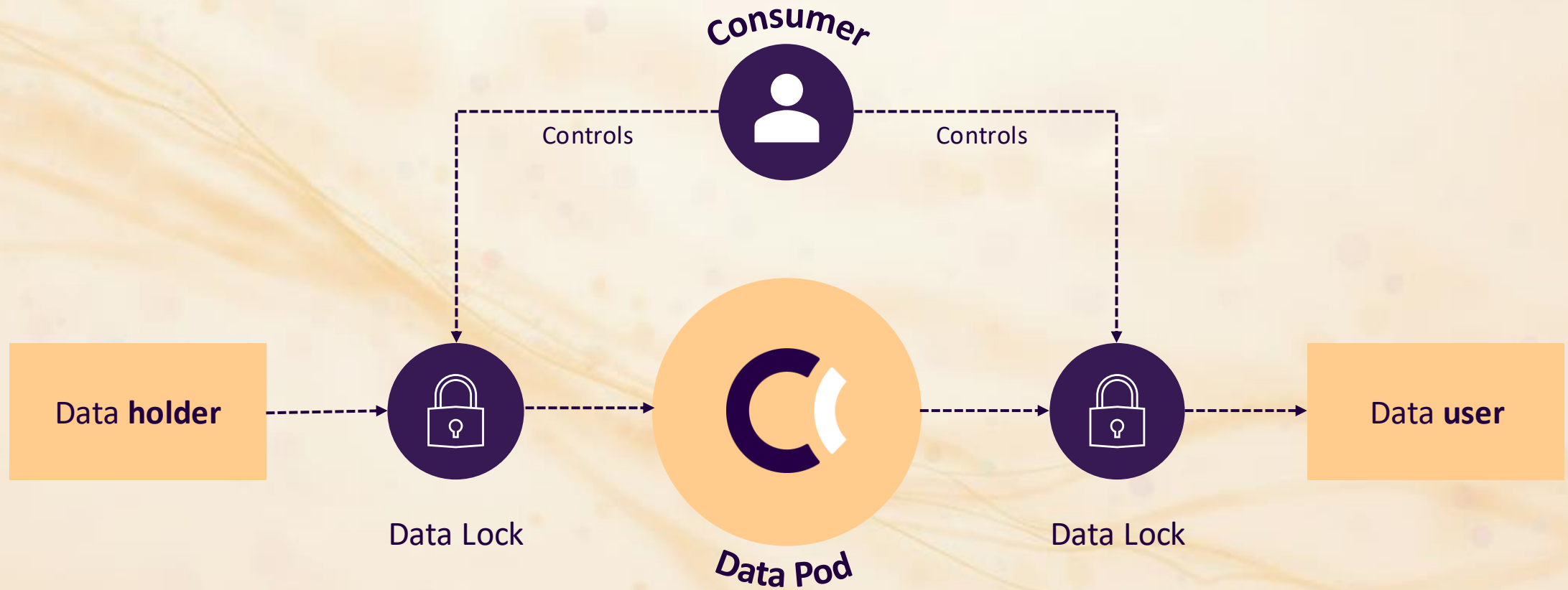
# DATAPODS





# HOW DATA CONTROL WORKS.

# THE CORE IDEA IS SIMPLE.



A large concrete dam with multiple spillways. Water is cascading over the spillways, creating a misty spray at the base. The dam is situated in a rocky, hilly area. The water in the reservoir behind the dam is a deep blue color. The overall scene is captured in a slightly desaturated, blue-toned aesthetic.

**VALUE OF DATA IS  
AVAILABLE WHILE  
CONTROL  
MECHANISMS ARE IN  
PLACE.**

**VERY DIFFERENT FROM  
THE OLD MODEL.**

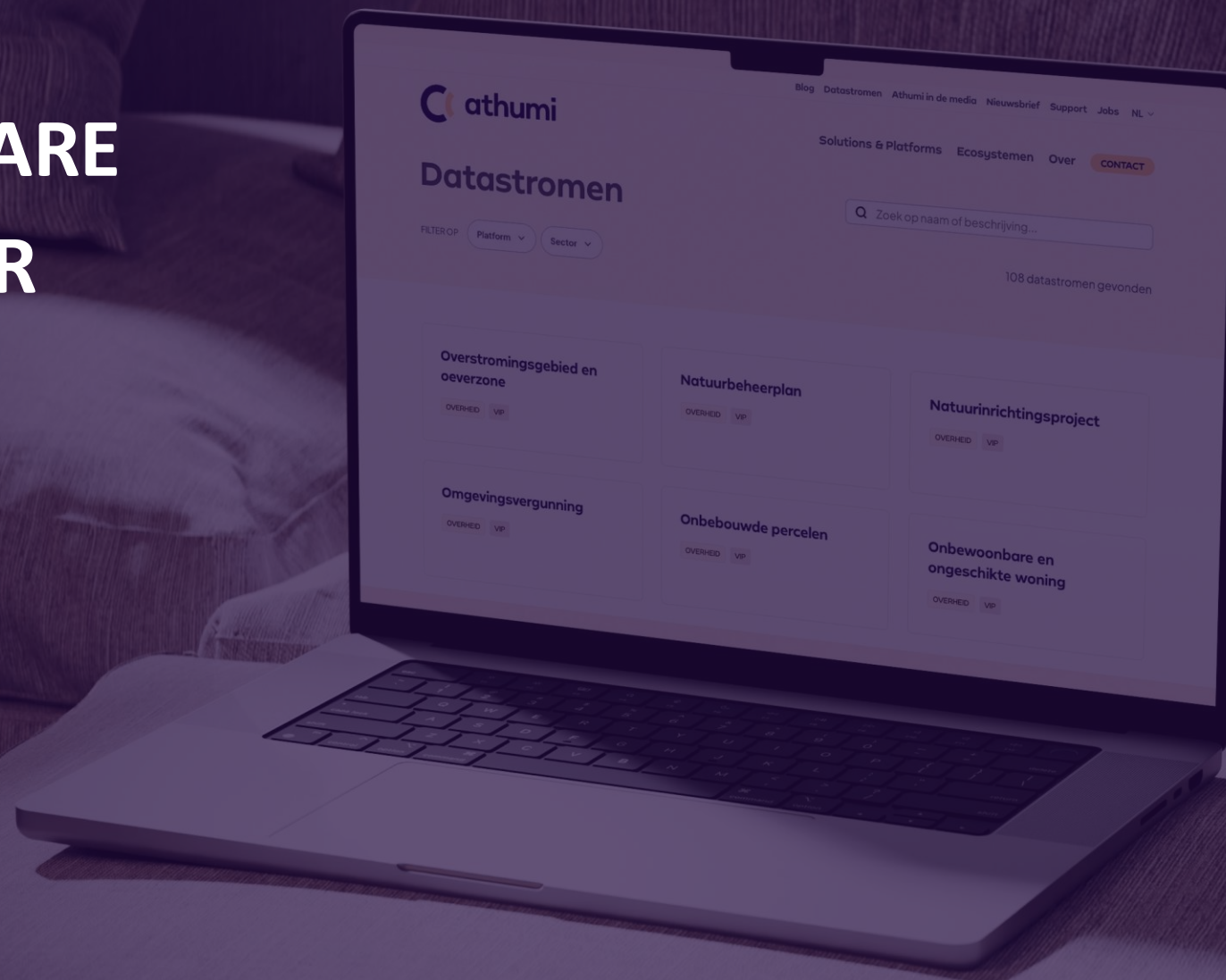


**MEDIA SECTOR  
CONTROLLED PODS**

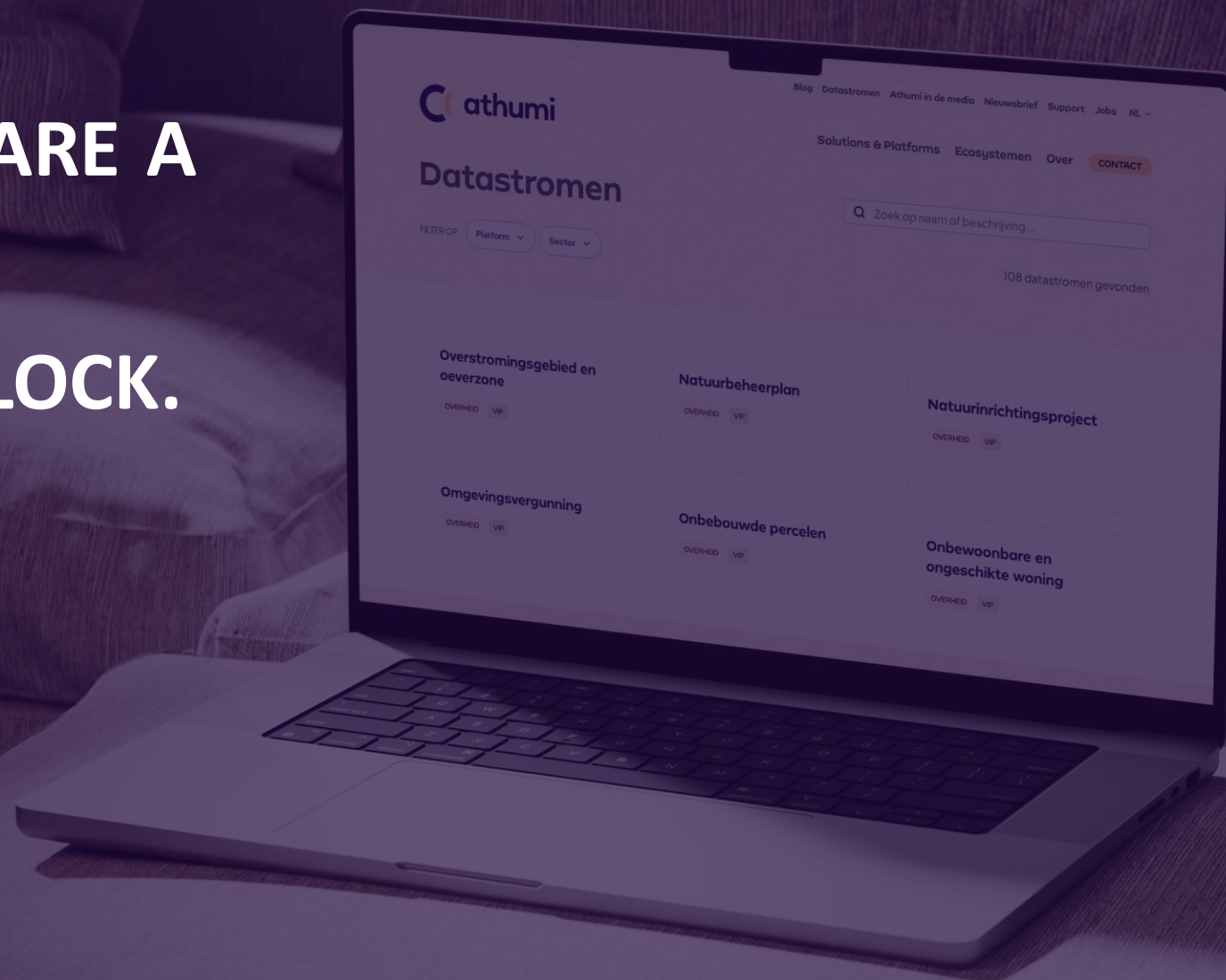


**GOV CONTROLLED  
PODS**

**DATA PODS ARE  
NOT A SILVER  
BULLET.**



**DATA PODS ARE A  
POWERFUL  
BUILDING BLOCK.**





**CONTROLLED  
OPENNESS.**



# ARCHITECTURE, TECHNOLOGY & CLOUD.

# TRAPPED IN THE PIT OF SUCCESS



# SOVEREIGNTY IS A SLIDER, NOT A SWITCH



**REGAIN  
CONTROL  
BEFORE  
YOU MOVE.**

A person wearing headphones is shown in profile, focused on a complex control console. The console is filled with numerous buttons, knobs, and sliders, some of which are illuminated with small lights. The background is dark and out of focus, suggesting a professional studio or control room environment. The overall lighting is dim, with a blueish-purple hue.

**EXIT READINESS IS A  
CAPABILITY,  
NOT A CRISIS RESPONSE**

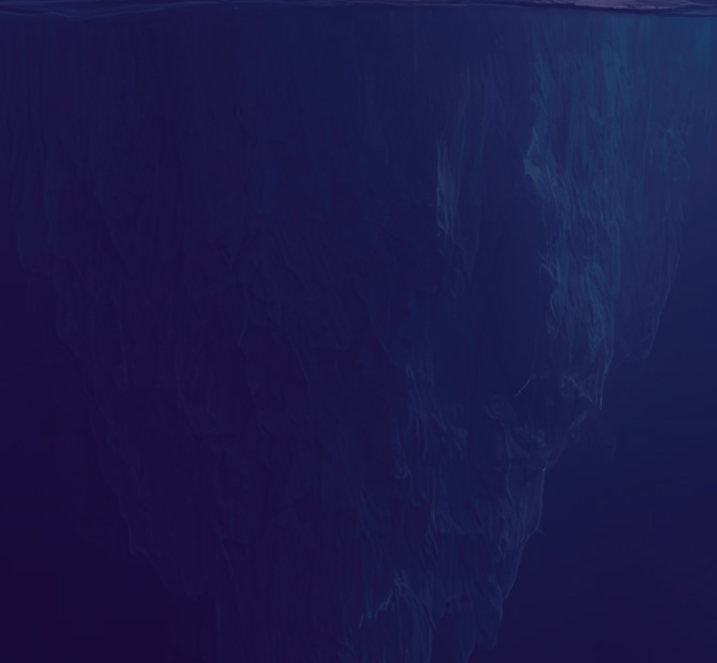
**SOVEREIGNTY  
CAN NEVER MEAN  
LOWERING THE  
BAR**





# THE ARCHITECTURE HAS TO KEEP OPTIONS OPEN

**CONTINUITY.  
SECURITY.  
GOVERNANCE.**



**sovereignty is  
about self-  
determination  
and freedom of  
choice**



**ACT TODAY IN A  
WAY THAT  
INCREASES YOUR  
ABILITY TO  
CHANGE  
TOMORROW**

